

DESIGN GUIDE

EVOBOARD

Hybrid loft storage platform
& Enhanced insulation system

Storage innovation product from Evobead Ltd

EVOBOARD
Hybrid Loft Storage & Insulation

www.evo-board.co.uk

Insulation EPS

all Equipment

Wall installation nationwide

Furnishing EPS

EV
INNOVATIVE | EFFICIENT



01443 228 584

BEAD

EFFICIENT | SUSTAINABLE

www.evobead.co.uk



EVOBOARD

Hybrid loft storage platform & Enhanced insulation system

CONTENTS

What is EvoBoard	1
EvoBoard Components	2
EvoBoard System Components	3
Delivery & Site Handling	4
Installation Procedure	5
Installation Video	9
Thermal Performance	10
Structural Performance	10
Disclaimer	11

WHAT IS EVOBOARD



EvoBoard EPS Panel System, is a revolutionary new way to insulate Lofts and designed for a quick and easy DIY and professional installation.

Designed as a better option to timber when requiring storage space in lofts.

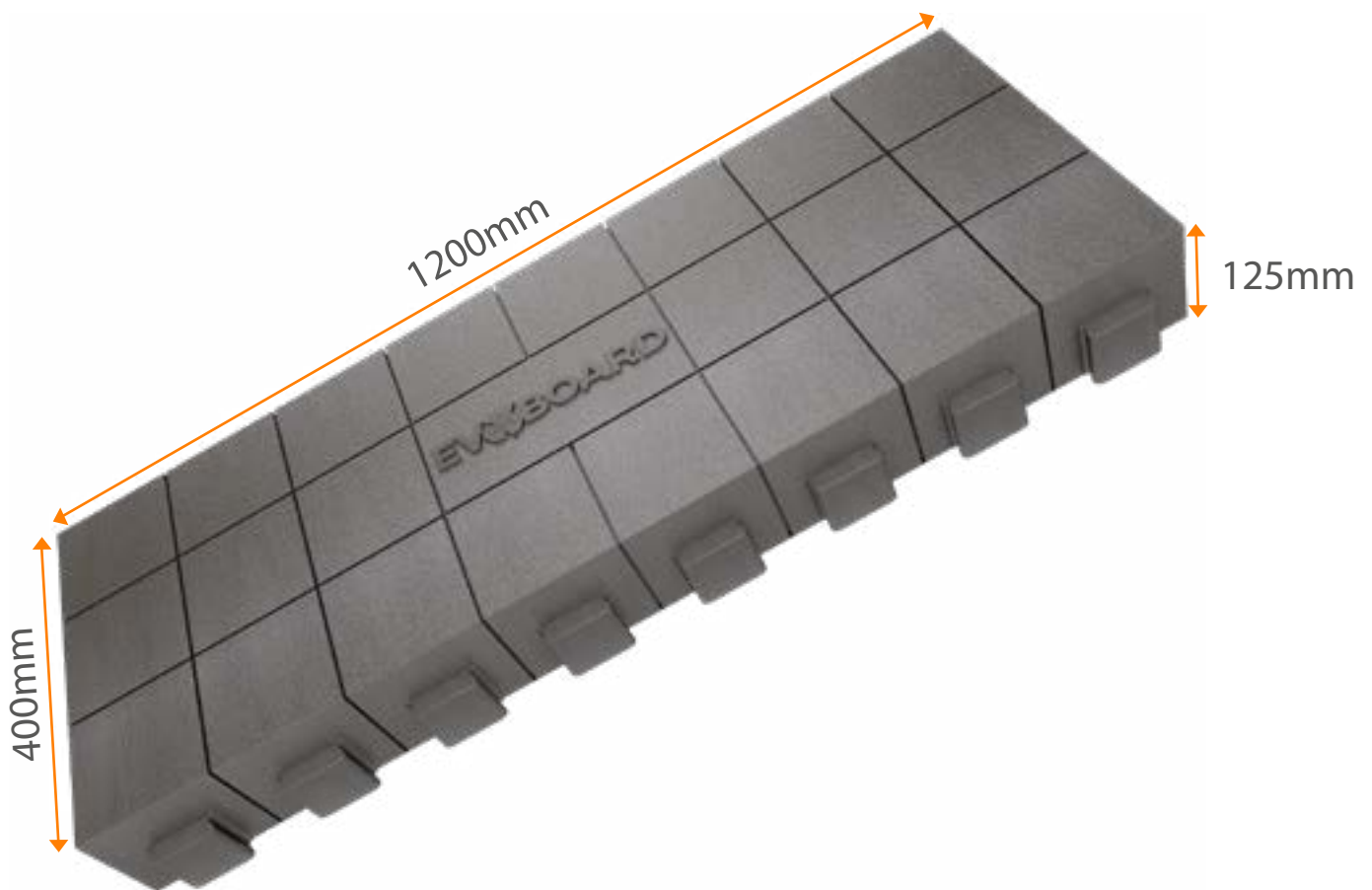
EvoBoard removes need for timber saving trees, and providing a 100% recyclable platform.

EvoBoard is ideal for new builds and retrofit in existing properties. The system comprises of EvoBoard Infra Red Absorbing EPS insulation panels, that are easily joined together to form a complete loft Storage surface suitable to both insulation & structural flooring applications.

EvoBoard EPS Panels provide high thermal performance, and provide substantial benefits.

- ▶ Extremely quick install times designed for Professional Installers
- ▶ Easy to fit insulation panels
- ▶ Intuitive Design makes for quick and easy assembly
- ▶ Unique moulded Dovetail sides on either side allow panels to interlock together, forming a continuous layer of Insulation & Loft Storage surface
- ▶ Minimal waste during Installation
- ▶ No need for top sheet insulation
- ▶ Reduced thermal bridging

EVOBOARD COMPONENTS



TYPICAL EVOBOARD PANELS ARE SUPPLIED AS:

- ▶ Material: Expanded Polystyrene with Infrared absorbing Technology (White or Silver)
- ▶ Size: 1200mm x 400mm x 125mm (Other thicknesses may be available at request)
- ▶ Thermal Conductivity: 0.030 W/mK
- ▶ Nominal Density: 24Kg/M3 (Other densities may be available)

EVOBOARD SYSTEM COMPONENTS



EVOBOARD SYSTEM COMPONENTS:

EvoBoard approved fixings:

- ▶ Self Drilling Insulation Screws: 160mm x 4.8mm
- ▶ Insulation Washer: 60mm Diameter

Ancillary Components

- ▶ Conduit: Conduit manufactured to BS EN 61386 (Various sizes available)
- ▶ Existing Loft Material: Loft Insulation to be same height as loft joist- usually 100mm. Manufactured to 0.044 W/mK thermal conductivity and Euroclass A1 to BS EN 13501-1
- ▶ Timber sheet: Plywood or Chipboard (Various sizes available)
- ▶ Timber: Various sizes available
- ▶ UPVC Trim: Various sizes available

DELIVERY & SITE HANDLING



EvoBoard panels are supplied shrink wrapped and packed in cubed packs, but are otherwise unprotected.

All EvoBoard panels will have a packing label showing:

Product name

Dimensions

Agrément number: BAR-23-300-P-A-UK

UKCA Details (where applicable)

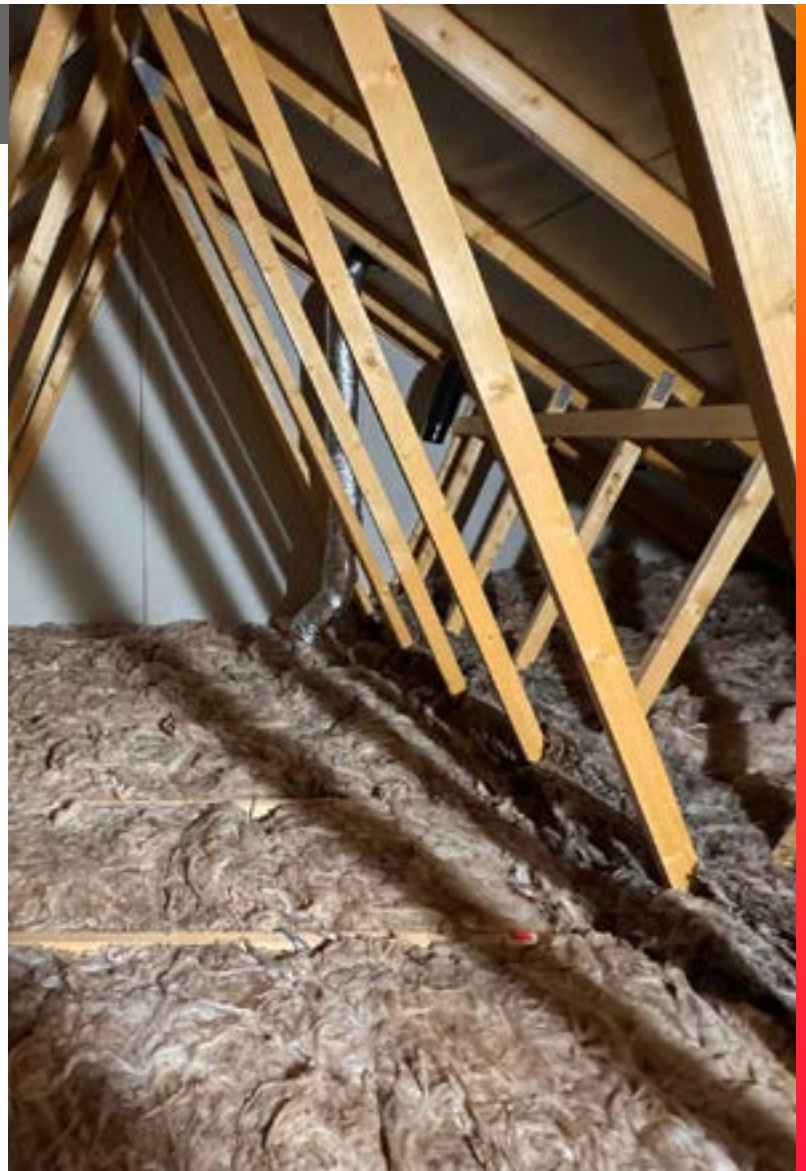
Date of manufacture

- ▶ Care **MUST** be taken when moving panels and during storage to avoid damage.
- ▶ EvoBoard Panels should be stored in clean, dry conditions, stacked on a flat base and clear of the ground.
- ▶ Avoid storing panels in direct sunlight for prolonged periods and secure to avoid wind damage.
- ▶ The panel shall be protected from being dropped or crushed by objects
- ▶ EvoBoard panels must not be exposed to heat, open flame or other ignition sources and store away from flammable material such as paint and solvents.
- ▶ To ensure maximum performance when installed, on site precautions shall be taken to protect EvoBoard panels from contaminants that may damage the product. Recommend flat shoes.

INSTALLATION METHOD FOR STORAGE AREA

PREPARATION

- ▶ Identify the area to be installed as per survey and clear working area.
- ▶ Prepare any cables or pipework as per survey. Cables may need conduit.
- ▶ All high amp cables such as shower cables must be positioned above insulation.
- ▶ Spotlights must be treated as per manufacturer's instructions, or industry standards. Covers can be used if needed, but will need to be lower than joist level to still allow EvoBoard to sit on the joist as designed.
- ▶ If the area has loft material above the joists then remove this to allow EvoBoard panels to be fitted.
- ▶ Ensure there is loft material between the joists which will sit below the EvoBoard panel.
- ▶ Ensure there are no obstruction on the joists preventing a flush platform.
- ▶ Ensure you have all the required materials & correct PPE.



INSTALLATION

- ▶ Install the first panel as per the survey.
- ▶ EvoBoard is designed to be installed sitting on timber joists parallel or perpendicular to the joists.
- ▶ EvoBoard panels have recesses on the bottom of the panel to accept the joists at 400mm & 600mm centres.
- ▶ Ensure the edges of the EvoBoard panels sit on the centre of the joists
- ▶ The second panel can be attached to the first panel using the dove tail connectors.
- ▶ When connecting panels there should not be any gaps.



- ▶ Rows of panels can then be installed to match the area needed in the survey.
- ▶ Always ensure the last panel sits centre on the timber joist.
- ▶ Do not finish a system with an EvoBoard panel overhanging a timber joist.
- ▶ On consistent centres the system will match joist centres at 400mm.
- ▶ On occasions where the EvoBoard does not sit on the joist you can cut the panel to the previous joist and start again.
- ▶ This in essence will result in 2 independent systems sitting next to each other but overcomes incorrect joist centres – and avoids the system overhanging and not on the joist.

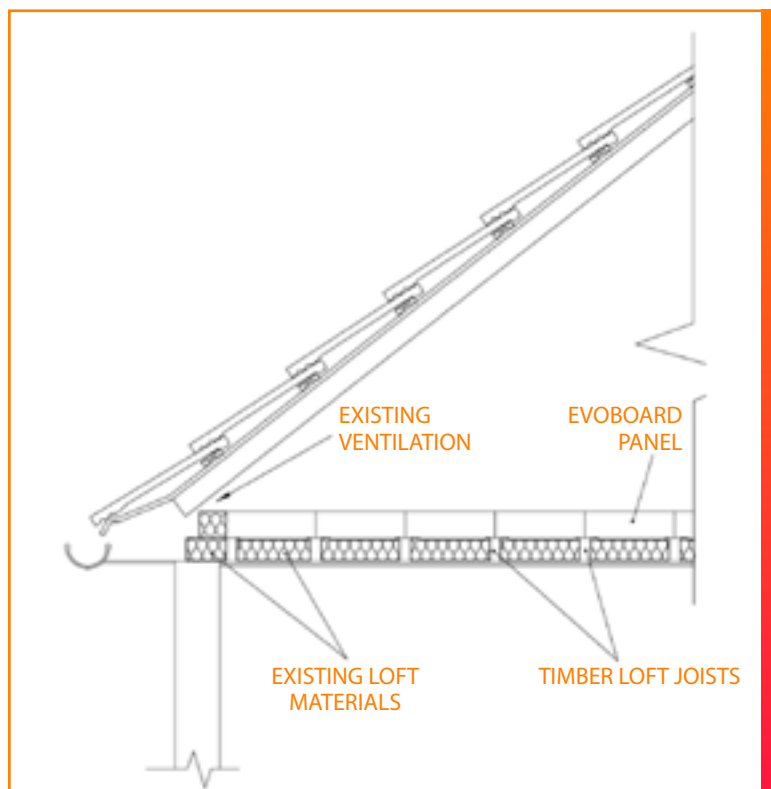


INSTALLATION

- ▶ If needed, panels can be cut or notched out using a hand saw to fit around any roof trusses / supports or similar obstacles.
- ▶ Ensure that a continuous layer of insulation is obtained.
- ▶ When cutting EvoBoard we recommend to 10mm less than the actual measurement to allow a good fit.
- ▶ If required, widen joists using additional timber if access is blocked by a structural beam or purlin.



- ▶ When installing near the eaves of a loft, maintain a 75mm gap to allow airflow.
- ▶ The area between the EvoBoard system and the wall plate may need to be insulated with loft material while still ensuring air flow at the eave.



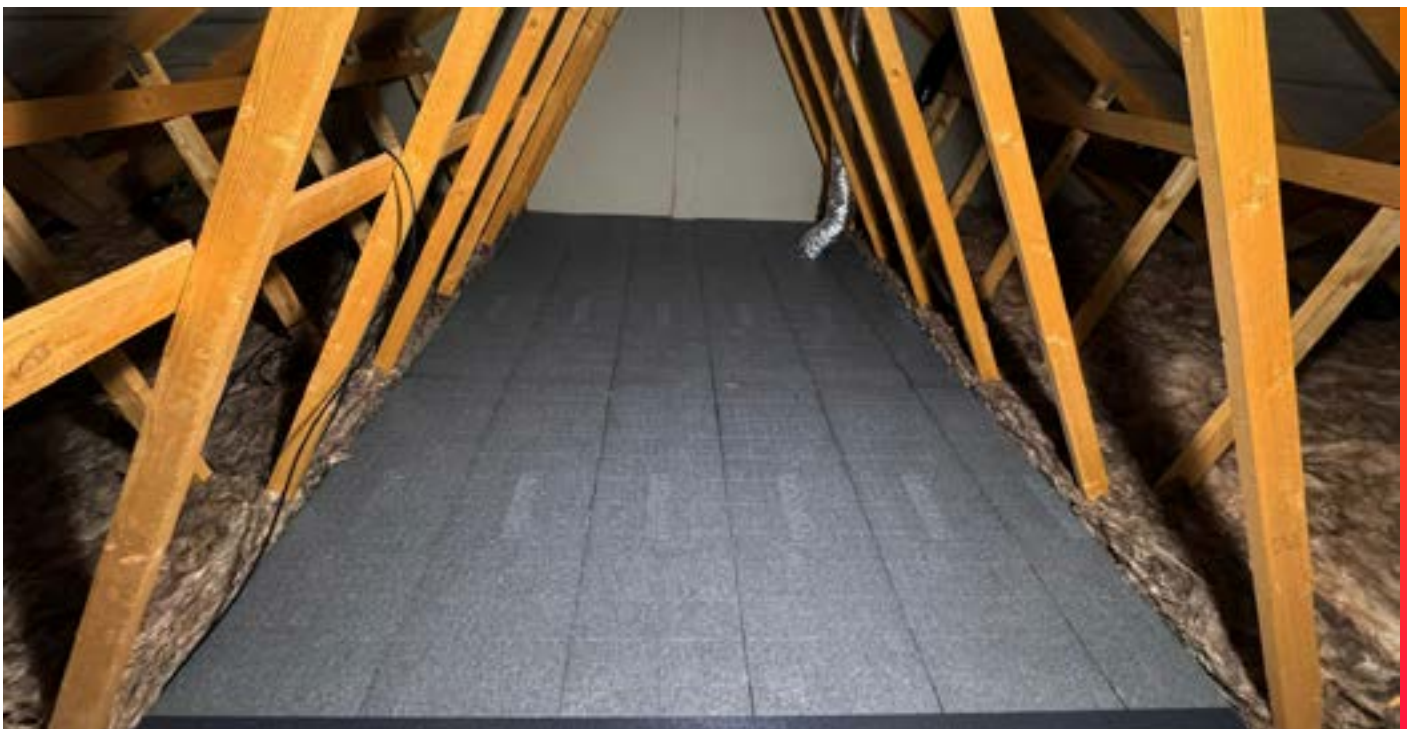
INSTALLATION

- ▶ Once all panels have been fitted the system can be fixed if required using Self Drilling Insulation Screws and insulation washers.
- ▶ One per corner of complete system is recommended.
- ▶ The screws are fixed through the washer and EvoBoard panel and into the timber joist.
- ▶ To prevent damage to loft entry around hatch UPVC trim can be used on the top edge.

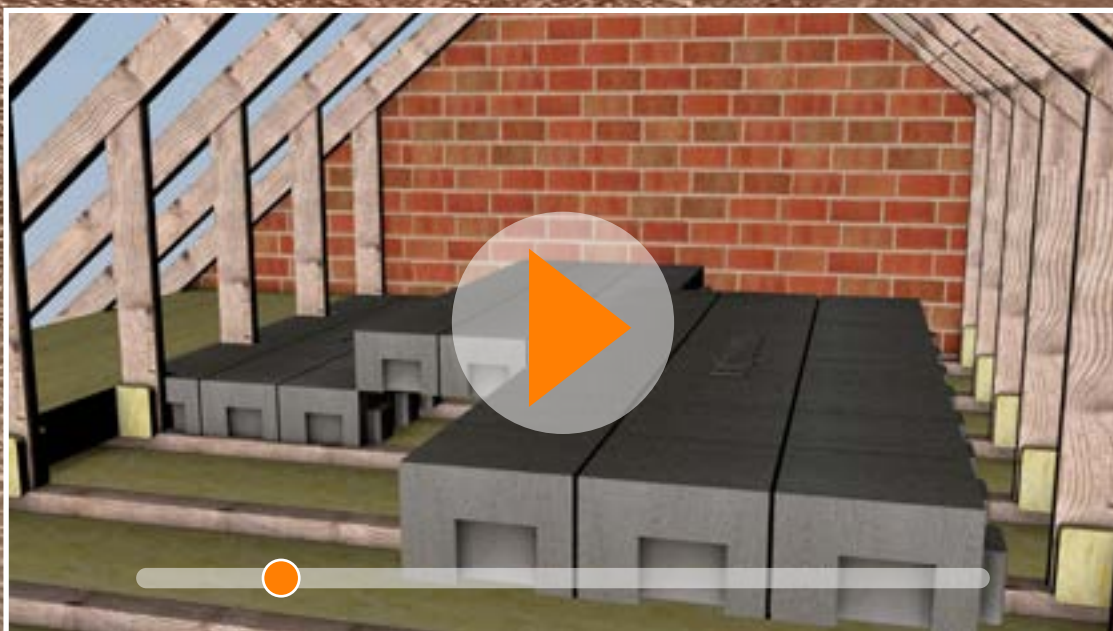


ADDITIONAL NOTES:

- ▶ Any gaps around the service pipes should be filled using loft insulation.
- ▶ Avoid damaging boards during installation, use walk boards to walk and work on top of fitted EvoBoard.



INSTALLATION VIDEO



THERMAL PERFORMANCE

- ▶ High Level Insulation Part L Compliant
- ▶ Infra Red absorbing Expanded Polystyrene
- ▶ Improved Thermal Conductivity 0.030 W/mk

STRUCTURAL PERFORMANCE

- ▶ Concentrated load: > 3.10kN when measured to BS EN 15037-4
- ▶ Compression Strength: EPS120
- ▶ Dimensional stability: DS(N)2 to BS EN 1603

DISCLAIMER

The information provided in this Operation manual should only be used in conjunction with the EvoBoard hybrid loft storage platform & enhanced insulation system, and not any other product or system. Specifications are only valid when using EvoBoard materials and specified equipment. Any other material and/or equipment used would fall outside of the EvoBoard Agrément Certificate and therefore not acknowledged.

These instructions do not purport to cover all details or variations in the equipment and do not claim to provide for every possible contingency met in connection with installation, operation, or maintenance.

Should further information be desired or should particular problems arise which are not covered sufficiently, the matter should be referred to EvoBoard.



KIWA Agrément certificate BAR-23-300-P-A-UK

CONTACT DETAILS

EVOBOARD / EVOBEAD

Hepworth Business Park

Pontyclun

CF72 9FQ

TEL: 0800 470 1376

EMAIL: info@evo-board.co.uk

EVOBOARD
Hybrid Loft Storage & Insulation

www.evo-board.co.uk